

DETAILED PROJECT PLAN

HLF Programme Area			
Area	Programme Title	Main Area (tick one box only)	Links to Other Areas
A	Conserving or restoring the built and natural features that create the historic landscape character.		✓
B	Increasing community participation in local heritage	✓	
C	Increasing access to and learning about the landscape and its heritage		✓
D	Increasing training opportunities in local heritage skills		✓
E	Scheme staffing, overheads and running costs		

PB4

Engaging with the Nature of the Bovey Valley



©Natural England

Heading	Content
Summary	Developing volunteering and community participatory activities to engage people with the nature in the Bovey Valley, part of the East Dartmoor National Nature Reserve. This project compliments PA4 Discovering the Nature of the Bovey Valley
Project description	<p>Natural England (NE) and the Woodland Trust (WT) respectively own and manage East Dartmoor National Nature Reserve (NNR) and further woodland in the Bovey Valley.</p> <p>The two organisations have collaborated on a package of measures in a single project that will bring about a step change in the focus and management ethos of this stunning landscape.</p> <p>This project cuts across all the programme areas but to show the how overall project will meet the individual programme aims we have presented it as:</p> <p>PA4- Discovering the Nature of the Bovey Valley PB4- Engaging with the Nature of the Bovey Valley PC1- Discovering the Dartmoor Story- MTMTE Interpretation</p>

PD2- Eco skills
PE1- Contribution to staff team

The overarching aims of the projects developed by NE and WT are to:

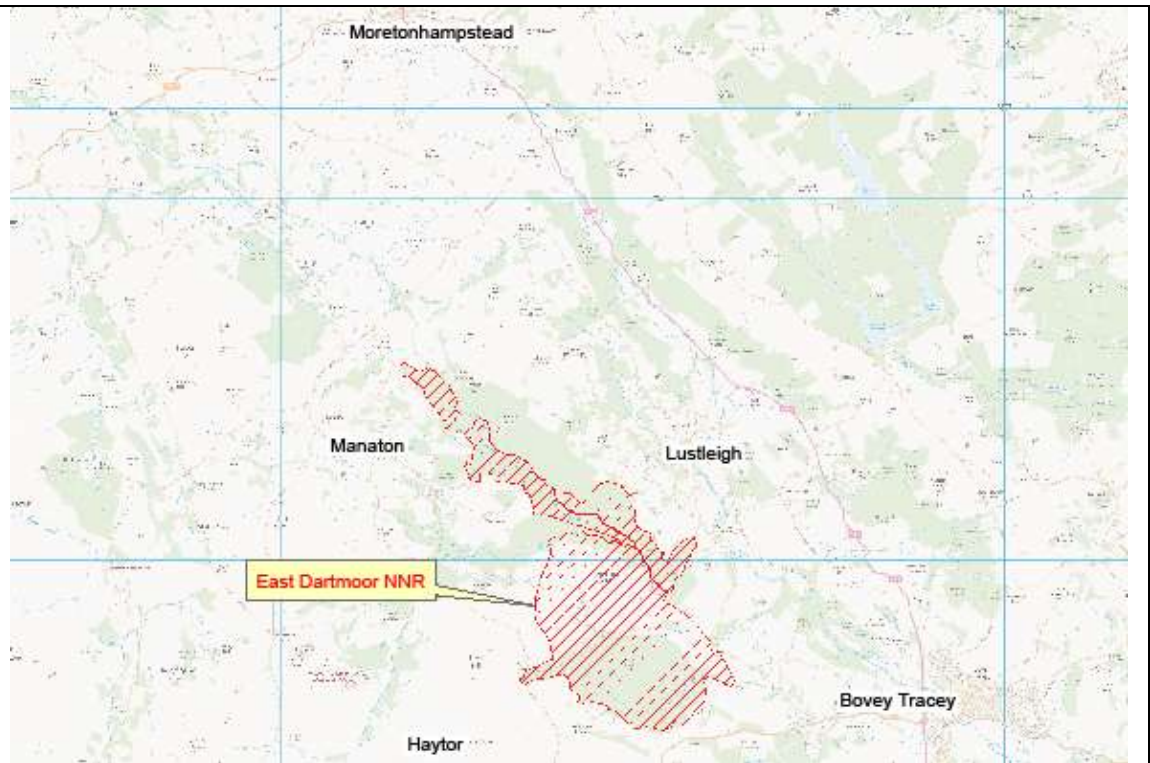
- Future-proof key species, habitats and historic features
- Foster deeper understanding and life-long interest in the area's natural and cultural heritage.
- Embed local communities in all aspects of management

To do this, we will need to develop a continuing link with a wide range of people, communities and organisations, to be able to:

- Establishing ongoing, productive relationships with local residents, groups and organisations
- Investing in priority infrastructure to cater for predicted needs and demands
- Providing appropriate physical and intellectual access for visitors of all ages, abilities and backgrounds
- Strengthening learning opportunities for visitors, educational establishments and local communities

East Dartmoor NNR is one of the best places in the Country to enjoy the outdoors and to encounter wildlife. Managed by NE and the WT, the Reserve lies just a 'stone's throw' from the iconic Haytor Rocks and straddles higher open moors and the lower wooded valleys of the River Bovey and Becca Brook. Internationally important for its extensive ancient upland oak wood and heathland, the NNR is legally protected as a Special Area of Conservation and Site of Special Scientific Interest. The Woodland Trust also owns and manages Pullabrook and Houndtor Woods in the Bovey Valley, which are contiguous with NNR.

Location of East Dartmoor NNR



East Dartmoor NNR – Bovey Valley from lower Trendlebere car park



The WT is at the forefront of restoring and enhancing ancient woodland now planted with conifers. It is proposed to sensitively restore the conifer plantations at Pullabrook, Houndtor and Hisley Woods to their former broadleaf woodland condition. This will comprise thinning of conifer to create more open conditions for native ground flora and woodland to regenerate. Targeting areas with relict ancient woodland, felling will also be prioritised to unveil areas with archaeological interest, such as the medieval Boveycombe farmstead.

Restoration will be achieved through the efforts of staff, specialist contractors, local volunteers and interest groups as well as through a series of practical events and demonstration days.

Community Events and Activities

A broad programme of community events and activities is proposed to excite and engage local people in all aspects of their local natural and cultural heritage. An integral element will be the expanded role of ‘citizen science’ and volunteering in the long-term survey, monitoring and management of the special features of the area. Underpinning and supporting this programme will be the creation a new “Science Centre” at the NNR office as part of the PD2 EcoSkills project. This new facility will provide the practical wherewithal for educational groups and establishments as well as for individual students and researchers to engage more deeply in scientific study and heritage research.

Community Participation through Volunteering

Lichens

The lichen assemblage is a special interest feature of the SSSI but recent surveys have shown the 155 plus species are under threat from declining light levels as the woodland matures and becomes increasingly dense. Conditions on and near the boundary of the NNR and proposed woodland restoration areas will be highly suitable for work to restore this woodland, and so, with the help of local communities, the aim is to survey the NNR boundaries and neighbouring land to assess current lichen populations and their potential for future dispersal and conservation in the wider landscape.

Bats

Although the Bovey Valley is a stronghold for Barbastelle bats, very little is known about their seasonal behaviour and landscape requirements. The WT and NE, with the help of the Bat Conservation Trust (BCT) and local volunteers, wish undertake a year-long study to fully understand the conservation needs of this shy and highly mobile species. The results will inform future management decisions as well as the design of an ongoing monitoring protocol for Barbastelles and other bat populations in the Valley.

Archaeology

The long history of human occupation is evidenced by a Bronze age stone row on Trendlebere Down, Iron-age hill forts and medieval farmsteads in the Bovey Valley and the industrial revolution period copper mine and Bovey Pottery leat in Yarner Wood. NE and the WT wish to ground-truth known and potential new historic features detected by the LiDAR survey commissioned in Stage 1. This work will be led by a dedicated group of local volunteers called the ‘History Hunters’ as well as other local history groups, individuals and communities.

Community Advisory Group

During Stage 1, the WT and NE established a Community Advisory Group to begin to strengthen the community connections and involvement in site management. This process will continue and grow in Stage 2.

Beneficiaries and communication

The EDNNR is widely visited and well loved by locals and visitors alike. NE have been gathering data on visitor numbers for three years across the NNR, although there is a lot of “noise” in the data, in board terms it is estimated there are some 50,000 plus visits per annum to the EDNNR. Presently, there is no indication of any increase in numbers over this 3 year period but at present the data is still in a period rationalisation and fine tuning.

	<p>Potential beneficiaries fall into the following broad categories:</p> <ul style="list-style-type: none"> • Locals (Lustleigh/Manaton and Bovey Parishes) • Tourism (Day Trips to the Moor and Holiday makers – estimated at 2.8 million in 2007 for the National Park and the trend is increasing) • Education (Primary/Secondary Schools and Universities) • Volunteers (drawn from all the above but including graduates of colleges and universities looking to develop future careers). <p>Despite separating people into groups, the actual individuals are often both a “local and volunteer” and this is the same for the other categories, so it’s important to keep this in mind when considering the value to beneficiaries.</p> <p>Benefits</p> <ul style="list-style-type: none"> • Locals – The plans intend to create the opportunity for local people to obtain a deeper understanding of the work of the EDNNR and to be involved in and to influence the long term management of the reserve. A programme of events will help locals to enjoy directly the value and the benefits that the reserve can provide. • Visitors - The plan will provide an opportunity for the “uninitiated “ to explore and to discover the importance of the EDNNR but helping to minimise the negative impact that visitors are perceived to bring. • Education – The development of the twining/John Muir approach is intended to appeal to primary schools in particular and to better establish longer term working relationships with schools both on site but off site at the schools. The development of “laboratory/research” space at Yarner will help re-enforce relationships with higher education establishments and provide a work place for longer term conservation studies at a tertiary/university level. • Volunteers – Through the work of the Wildlife Hit Squad, History Hunters and Lichen Lovers core volunteer teams which have been developed through the Development Phase of the project a far wider group of future volunteers can be reached by the project. <p>Communication</p> <p>Throughout the development phase the NE/WT have liaised and consulted widely with in particular the local communities of Lustleigh, Manaton and Bovey Tracey. We intend to continue this dialogue, through public meetings, attendance at parish council meetings and regular email updates available for publications in local magazines.</p> <p>For the wider Landscape Partnership Scheme both NE/WT wish to be directly involved with the web development, seeing this as an important conduit for communication and as a test bed for innovative “interpretation” and thus minimise the need for “on site” interpretation.</p>
<p>Project buy-in</p>	<ul style="list-style-type: none"> • Innovative development of joint working between NE and WT • Programme of public consultation through Development Phase, culminating in the publication of a report in October 2013. • Appointment of an independent advisory group with range of “expertise” in project areas • Building a volunteer programme and resource during the project Development Phase

Project lead	<p>David Rickwood Site Manager (Devon) Woodland Trust davidrickwood@woodlandtrust.org.uk 07827 820637</p> <p>Simon Lee Senior Reserves Manager (Dartmoor) Natural England Simon.lee@naturalengland.org.uk 01626 831580</p>
Partners / contractors etc.	<ul style="list-style-type: none"> • TCV (Dartington) Volunteers Core • Devon Wildlife Trust - Volunteers Core • Wildlife Hit Squad – Volunteers Core • Lichen Lovers – Volunteers Core • History Hunters – Volunteers Core
Project development	<p>This project together with PA4 has significantly changed since it was first proposed as a result of public consultation. The Discovering the Nature of the Bovey Valley project has been split into four projects to reflect the four programme areas. PA4- protecting and conserving key species, PB4- developing volunteering and community participatory activities, PC1 Discovering the Dartmoor Story- interpreting the nature of the Bovey Valley in relation to the wider story of Dartmoor and PD2 Ecoskills- vocational training for graduates seeking to work in the environmental sector</p>
	<p>PROGRAMME B – Total £156,003</p> <p>EVENTS - Following the consultation process a revised programme of events was developed with a greater emphasis on interpreting both the natural and archaeological heritage of the EDNNR. Larger scale family events and activities for young children have been largely taken off site to be run and developed at nearby sites with larger holding capacities and more suitable facilities.</p> <p><i>Revised budget</i> £ 75, 828 plus Inflation £2839 plus contingency £2087 – Total £80,754</p> <p>VOLUNTEERS – The volunteer aspect remains largely as conceived the conservation (Wildlife Hit Squad/Lichen Lovers) aspects have developed well, delays to the LiDAR assessment has held back the archaeology (History Hunters) but the process by which this will move forward is in hand. We had recruited one key volunteer for the bat project around which we anticipate one or two other key volunteers to coalesce. We have also recruited an advisory panel of 5 but with two vacancies to be filled.</p> <p><i>Revised budget</i> £74,250 plus inflation £581 plus contingency £418 – Total - £75,249</p> <p>In our current budget we also have £119,850 intended for events delivery by MTMTE Community and events officer as per the schedule recently created following the consultation. <i>This is not shown in these figures but as a contribution towards the staff costs in Programme E.</i></p>

		Budget	Cash secured	Cash unsecured	In-kind	Vols	HLF	Total	Contingency	Irrecoverable VAT
PB4	Woodland Trust	£156,003	£19,001.50			£59,000	£78,001.50	£156,003	£5,295	

Activities and Timetable	See attached spreadsheet for events timetable.
---------------------------------	--

Activity Timeline	Y1						Y2				Y3				Y4				Y5													
	7	8	9	10	11	12	1	2	3	4	5	6	Q1	Q2	Q3	Q4	Q1	Q2	Q3	Q4	Q1	Q2	Q3	Q4	Q1	Q2	Q3	Q4				
Engaging with the Nature of the Bovey Valley																																
Events																																
Bovey Beauty - Annual Off Road Running Event and onsite conservation volunteering activity																																
Bioblitz Weekends (range of conservation/archaeology surveys) - Annual Event with alternative seasonal timing																																
Fungus Forays - Exploratory walks and cooking demonstration																																
Traditional Charcoal Weekend / Archaeology																																
Horse Logging Demonstration / mobile sawmilling																																

Activity Timeline	Y1						Y2				Y3				Y4				Y5										
	7	8	9	10	11	12	1	2	3	4	5	6	Q1	Q2	Q3	Q4	Q1	Q2	Q3	Q4	Q1	Q2	Q3	Q4	Q1	Q2	Q3	Q4	
Engaging with the Nature of the Bovey Valley																													
Volunteers																													
History Hunters - consultant to lead volunteers and printing costs																													
Lichen Lovers - consultant to guide the volunteers																													
Wildlife Hit Squad conservation tasks for volunteers - TCV costs, subcontractor to lead events																													
Volunteers - History Hunters																													
Volunteers - Lichen Lovers																													
Volunteers - Wildlife Hit Squad																													
Volunteers - EDNRR Community Advisory Group																													
Wildlife Hit Squad volunteer expenses - tools and travel expenses																													

Budgets	Cost Breakdown		
Estimated Total Cost	Cost:		Contingency:
	£156,003		£5,925 (includes £3,420 for inflation)
VAT	a. Is VAT applicable?	b. Is VAT reclaimable?	c. VAT amount:
	NO	NO	£0
Lead Partner Contributions	Type:	Secured:	Unsecured:
	Cash (source):	£ 19,001.50	£0
	Staff:	£ 0	£0
	Volunteers:	£ 0	£59,000
	In-kind:	£ 0	£0
	TOTAL:	£19,001.50	£59,000
Other Contributions	Type:	Secured:	Unsecured:
	Cash (source):	£0	£0
	Staff (source):	£0	£0
	Volunteers:	£0	£0
	In-kind:	£0	£0
	TOTAL:	£0	£0
<i>Moor than meets the eye contribution</i>	Contribution:		Intervention Rate (%)
	£78,001.50		50%
Outputs	<p>The following describes the specific outputs of this project:</p> <p>Events</p> <ul style="list-style-type: none"> An engaging package of public events, activities and new interpretive media to strengthen understanding, interest and involvement in the NNR and Bovey Valley <p>Volunteers</p> <ul style="list-style-type: none"> Clear and consolidate key historic features such as Vinnimoor and Boveycombe farms and provide additional open habitats to sustain key lichen and butterfly populations. Undertake a specific survey of NNR boundaries and neighbouring land to assess extent of lichen populations and dispersal potential in the wider landscape. Conduct a year-long study of Barbastelle bats to fully understand their conservation and landscape management requirements. Use this project as a spring board to establish a volunteer-led long-term study of all bat species in the Bovey Valley. Following the LiDAR survey, deliver a programme of field survey, recording and enhancements of the historic features led by local history groups and communities. 		

	<ul style="list-style-type: none"> • Support Community Advisory Group to strengthen the community connections and involvement in site management. • Offer a greater range of 'citizen science' and volunteering opportunities to facilitate further scientific discovery and involvement in the site.
Output indicators and targets	<p>The following describes the specific project outputs with indicators and/or targets where applicable:</p> <p>Events</p> <ul style="list-style-type: none"> • Delivery of events programme as detailed in the events calendar. <p>Volunteers</p> <p>Archaeology</p> <ul style="list-style-type: none"> • Medieval farmsteads at Boveycombe and Vinnimoor assessed, recorded and cleared by Yr 3. • Programme of field survey, recording and enhancements of wider historic features covering Trendlebere Down and the Bovey Valley started in Yr 1 and completed in Yr5. <p>Lichens</p> <ul style="list-style-type: none"> • Completion of proposed habitat creation of open space and woodland edge for lichens and butterflies by year 3. Mapped and "before and after" photographic condition. • Lichen survey of NNR boundaries and neighbouring land covering c.500ha started in Yr 1 and completed in Yr 3. • Assessment of dispersal potential and secured management of lichens of up to 100ha of the wider landscape completed by Yr 5. <p>Barbastelle Bats</p> <ul style="list-style-type: none"> • Volunteer-led long-term study of all bat species in the Bovey Valley established in Yr 1. • 80 bat boxes, 4 SM2 static detectors installed etc. Involving 4 skilled specialist volunteers and 4 support volunteers. <p>Community Advisory Group</p> <ul style="list-style-type: none"> • Community Advisory Group constituted in Yr 1. Retain a core group of 6 volunteers with specific skills and areas or representation, i.e. Conservation, Access/Recreation, Education, Archaeology, local community representation (Bovey, Lustleigh, Manaton Parishes). • 121 number of training days per year for local volunteers (Lichen Lovers, Wildlife Hit Squad, History Hunters).
Outcomes	<ul style="list-style-type: none"> • People will have volunteered time • People will have developed skills • Heritage will be identified/ recorded <ul style="list-style-type: none"> ○ Local communities will be skilled-up to take a larger, active role in all aspects of management from surveying and monitoring of features through to promotion, education and habitat management.

	<ul style="list-style-type: none"> ● People will have learnt about heritage <ul style="list-style-type: none"> ○ The natural and cultural heritage of the area will be more fully understood and valued by a greater number of people. ● Heritage will be better managed <ul style="list-style-type: none"> ○ Ongoing co-operation and co-ordination of information and access opportunities between WT, NE and other partners will continue to enhance the experience of visitors from near and far. ○ The NNR and wider Bovey Valley will be placed on a much more sustainable footing for future generations to cherish and enjoy.
Evidence	<p>Evidence of the outcomes above will be demonstrated through these measures:</p> <ul style="list-style-type: none"> ● Evaluation of data from visitor and car counters compared to 2013 baseline ● Numbers of active volunteers and community groups compared to 2013 baseline ● Feedback from events, activities and community consultation events throughout the <i>Moor than meets the eye</i> scheme
Wider context	<p>There are meaningful connections between all the above proposals and the wider <i>Moor than meets the eye</i> scheme but the following describe the strongest links with other projects:</p> <ul style="list-style-type: none"> ● PA4 “Discovering the Nature of the Bovey Valley” ● PD2 “EcoSkills” project to be hosted at East Dartmoor NNR will be a major delivery and training companion for key aspects of the ‘Discovery the Nature of the Bovey Valley’ project. As well as their work on the wider scheme, it is anticipated that trainees will be involved in all NNR and Bovey Valley proposals to some degree but particularly with infrastructure changes, heritage projects, education and citizen science projects. There are also wider links to the development and delivery of the Dartmoor Diploma ● PC1 “Discovering the Dartmoor Story-MTMTE Interpretation”. The NNR and Bovey Valley physical and intellectual access proposals form a substantial component of the wider MTMTE scheme Interpretation plan (as referred to in the project description above). In essence, the interpretative proposals for the area will not only help unveil the local heritage interest but will also portray the wider story of 4000 years of human occupation on Dartmoor. <p>The project also links to PA1 Moorland Birds PB2 Parishscapes PB6 Managing Volunteers PD1 Dartmoor Diploma</p>

Legacy and maintenance of benefits	<p>In addition to the long-term security of the heritage features, the real legacy of the project will be the strengthened, ongoing relationships with local people, groups, partners and educational establishments. While the physical maintenance of infrastructure will be primarily the duty of NE and WT, future working will be enshrined in a spirit of shared responsibility with local people and partner organisations.</p>			
Risks and Risk Mitigation	Risk register			
	Risk	Severity	Likelihood	Measures undertaken
	Poor recruitment of volunteers.	H	L	Throughout the Development Phase significant effort has been made to secure volunteer interest and involvement, helped by good links with key partner organisations i.e. Universities, TCVs etc. Recruitment will be supported by the Community Officer
Insufficient support and participation in public events and activities.	H	L	During the development phase the project has sought to create new links and lines of dialogue with community groups. Events have been trialled and feedback from local communities has shaped the proposed programme.	
Background information	<ul style="list-style-type: none"> • 2013 Visitor and Volunteer Survey (Kate Measures Heritage and Learning Consultants). • Event Programme Proposal – 5 Year Summary - Draft • Moor than meets the eye Audience Development and Interpretation Plan (Resources4Change/Imagemakers) June 2013 			